

APPROVED
Rusk County, Texas

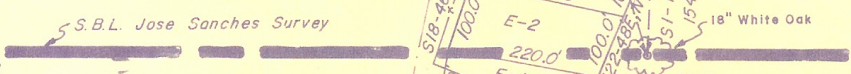
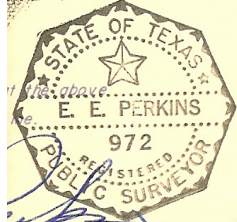
By _____
County Judge

ATTEST:

By _____
County Clerk
Date _____

SUBDIVISION
COUNTIES
CT NO. 1
ERS SURVEYS

July, 1974



- NOTE:
- (1) From 18" White Oak to N.E.C. of O.C. Hoover 43.49 acres, East, 500'.
 - (2) From 18" White Oak to S.E.C. of Jose Sanches Survey, East, 5,282'.

W. H. WALTERS SURVEY

A-809

Revised 7-23-76
Revised 7-15-76